

T.16N.,R.64W.,6th P.M.
1/4 Corner S.8/S.17

RECEIVED
LARAMIE COUNTY
CHEYENNE, WY.

'93 SEP 3 AM 10 29

CERTIFIED LAND CORNER RECORDATION

126090

DESCRIPTION OF CORNER EVIDENCE FOUND, AND ORIGINAL RECORD (If known)

Original Survey: Alfred M. Rodgers, U.S. Deputy Surveyor, July 1871

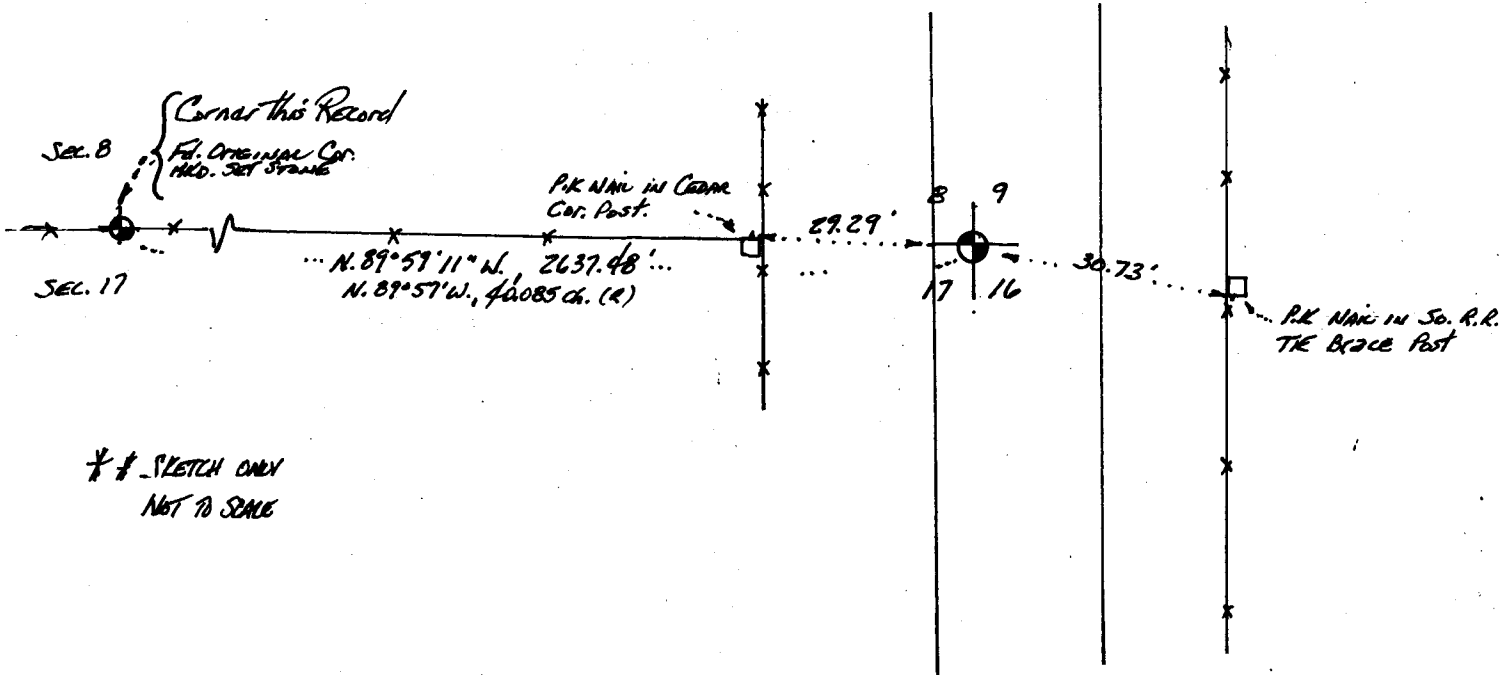
Record: Unkown

8-11-93 Found: Recovered a well set Quartz stone in a east-west fenceline.
Original stone was marked 1/4 on North face.

DESCRIPTION OF MONUMENT AND ACCESSORIES ESTABLISHED
TO PERPETUATE THE ORIGINAL LOCATION OF THIS CORNER:

Set: 5' Steel fence post witness adjacent and west of original stone.

SKETCH, WITH COURSE AND DISTANCE TO ADJACENT CORNER IF DETERMINED IN THIS SURVEY.
(May Sketch or Paste Reproduction on Reverse Side.)



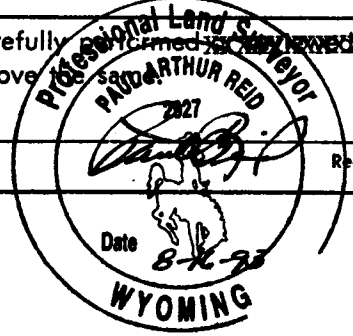
* SKETCH ONLY
NOT TO SCALE

Basis of Bearings: Solar Observation at the NW corner of Section 20, T.16N.,R.64W.,6th P.M.

I, PAUL A. REID certify that I have carefully examined the work done on the diagrammed corner as reported on this recordation form and approve

Signature of Surveyor

2927
Registration No.



STATE OF WYOMING,
Office of Clerk and Recorder,
County of _____

This "corner record" was filed for record on the _____ day of _____, 19____, was noted on the cross-index plat and is assigned page No. _____, in book No. _____.

County Official			
Cross Index No. <u>J7</u>	T. <u>16N.</u>	R. <u>64W., 6thP</u>	Mer.
_____	T. _____	R. _____	Mer.
_____	T. _____	R. _____	Mer.
_____	T. _____	R. _____	Mer.
_____	T. _____	R. _____	Mer.
_____	T. _____	R. _____	Mer.
_____	T. _____	R. _____	Mer.

1/4 Corner
S.8/S.17